

**WELCOME TO THE PFIZER  
FIRE DEPARTMENT!**

# Overview

OSHA 1910.156

Overview of the Pfizer Kalamazoo Fire  
Department

The Fire Department

Equipment

Onboarding guide

More learning

# The Pfizer Kalamazoo ERT

Our Fire Department has been supporting this site for 75 years.

While we operate like a municipal fire department in many ways, we are distinctly different too.

# The Pfizer Kalamazoo ERT

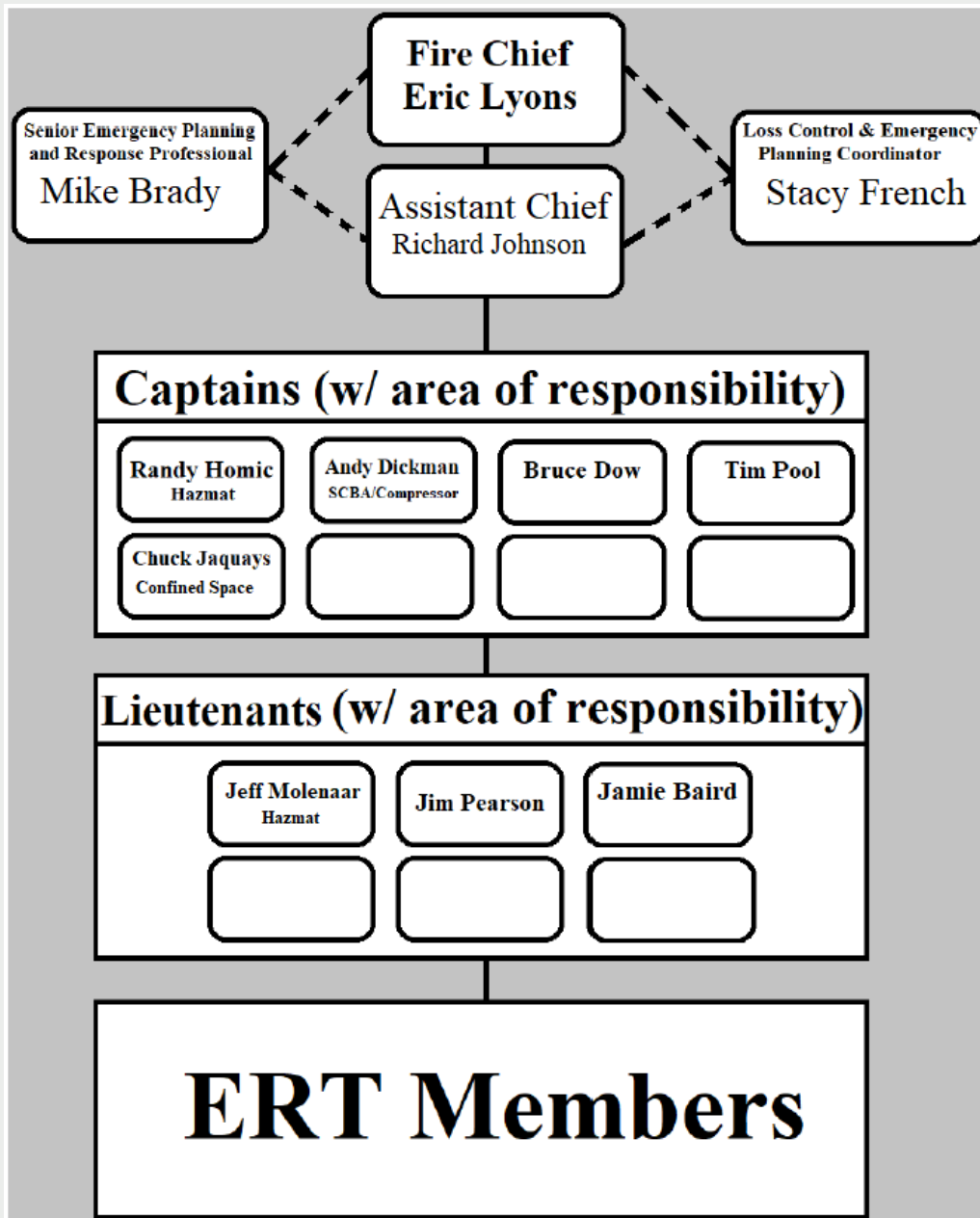
We are organized as an industrial fire department which is regulated through OSHA, a federal governmental agency.

The department has 4 specialized teams: EMS, Hazmat, Fire, and Confined Space.

Our Hazmat Team is organized and run according to OSHA 1910.159 (Fire Brigades).

# DEPARTMENTAL STRUCTURE





# DEPARTMENTAL CHAIN OF COMMAND



# Firefighter Orientation Overview

- Today's Powerpoint
- FTO Assignments
- KSA Packets
- Truck Acclimation
- Radio Acclimation
- Building ABCD Designation overview
- Station Orientation (Doors)
- Air Bottle Station Review

# **TEAM SCOPE AND MUTUAL AID AGENCIES**



It is the mission of the Pfizer Kalamazoo Fire Department to respond to and address spills, releases, exposures, fires, sprinkler activation, detector activation, gas leaks and any other chemical related hazard not only on site but on any Pfizer property within Kalamazoo County.

While most of the fire calls that we deal with can safely be addressed by our 35-member team, the scope of some calls automatically triggers mutual aid. For large scale Fire calls our mutual aid partner would be Portage Fire Department, while large scale Hazmat calls would bring in the Kalamazoo County Regional Hazmat Team.

We provide constant training to our team members to maintain our technician level proficiency.

Our training is organized into 4 quarterly trainings, with each training taking up a full 8-hour day.

As a new member to the team, you will be given resources to help you acclimate to how the team operates. Please read those documents carefully and if you have any questions then please send them to Captain Homic.



# Team Equipment

- Most of the the team's front-line gear is kept in the apparatus bay
- Tour of the truck and apparatus bay.



# Documents to be provided to you for review:

- KSA Sheets (TO BE MADE)
- Chauffeur's License Testing Brochure
- Fire Engine Driving Skill Sheets



## Recommended Items

- Spare change of clothes kept in a locker on site
- Spare uniform kept in a locker on site
- A trunking radio that has been programmed with the fire department channels
- The Active911 app





# Outside Resources

- City of Portage FD
- City of Portage PD
- 5<sup>th</sup> District Technical Rescue Team
- Kalamazoo County Hazmat Team
- Pfizer Technical Rescue Team



# PPE Cleaning

- Contact Asst. Chief Johnson if gear needs to be cleaned.
- We work with Portage, Texas, and Alamo Fire Departments to clean gear



# PPE Use for Calls

- Fire Call
- Sprinkler Activation
- Detector Activation
- Gas Leak



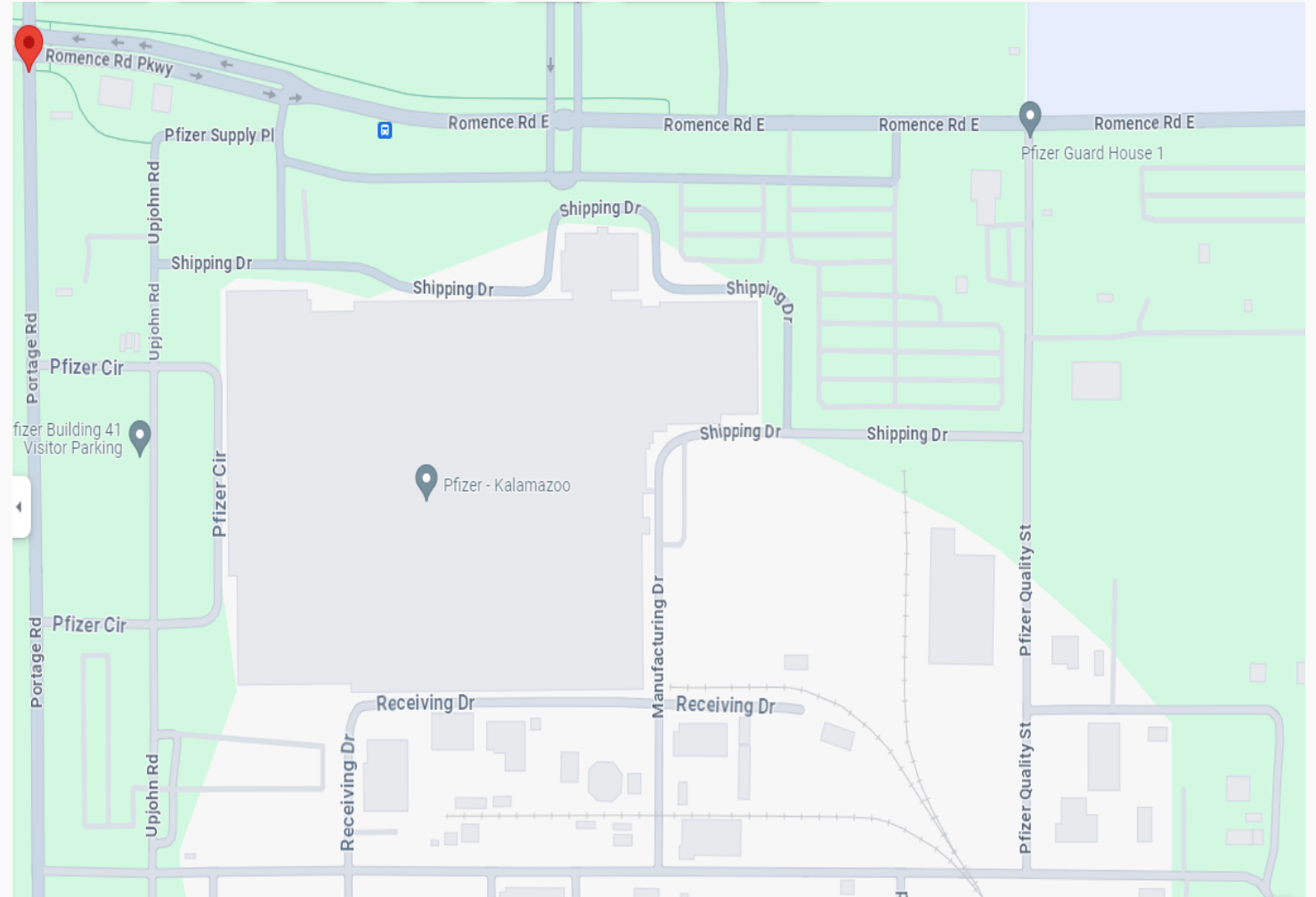


# Response Expectations

- Respond as you can
- Hourly colleague overview of off shift response
- Expectation for percentage of calls to obtain incentive

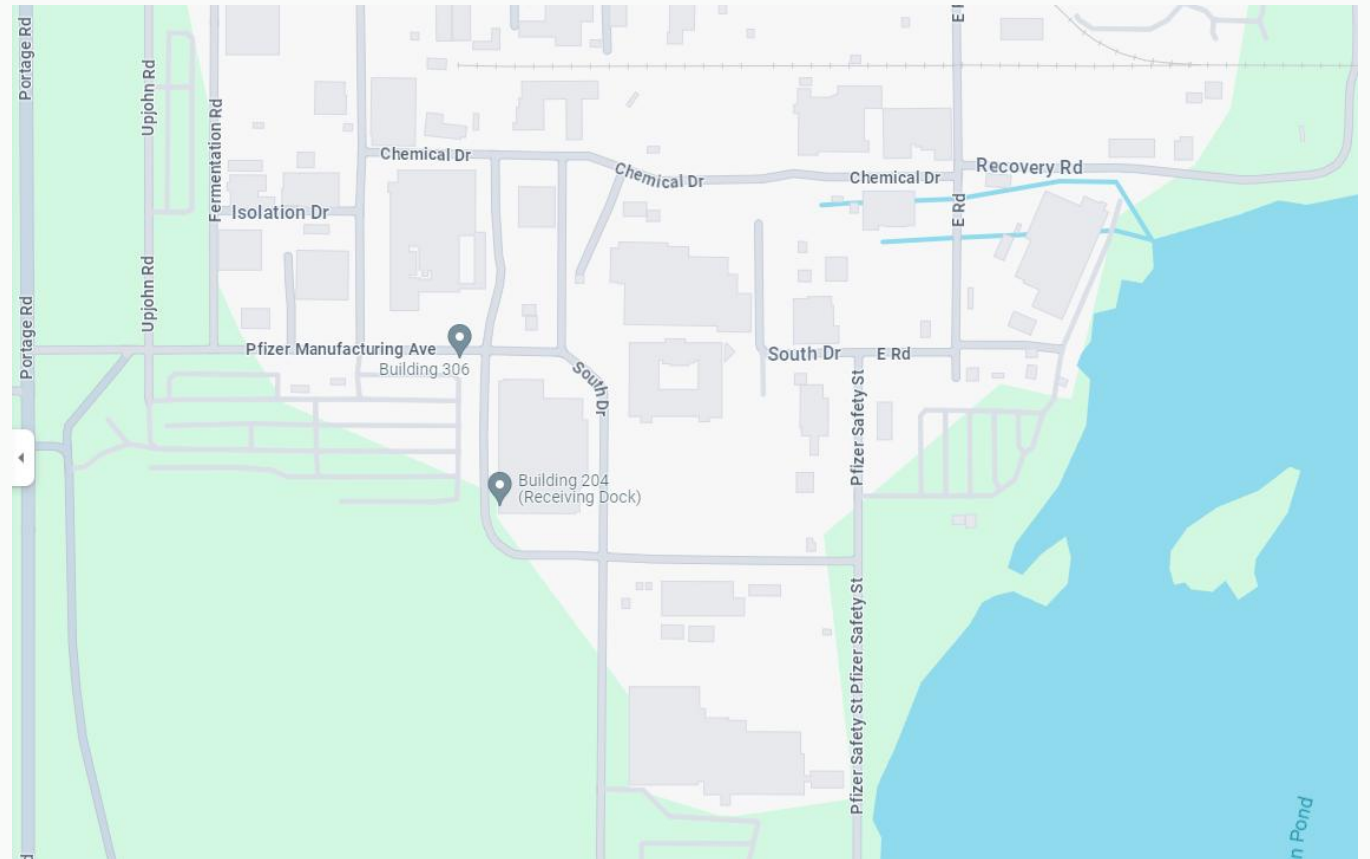


# Pfizer Road Names





# Pfizer Road Names







# Active 911



# Assign FTO

**THANK YOU**

Captain Randy Homic

269-833-0352

[Randy.homic@pfizer.com](mailto:Randy.homic@pfizer.com)